

[CORE] Social Responsibility (SR)

Sub Criterion: 5.3

SR4 Environmental impact

Sustainability Report

Partnerships for the Goals (SDG 17)

SRHU's Commitment to Collaborative Sustainable Development

Swami Rama Himalayan University demonstrates a deep commitment to SDG 17 through extensive collaborations with academic institutions, government agencies, industry partners, international bodies, and community organizations. These partnerships are central to SRHU's mission to promote inclusive, sustainable, and scalable development, foster innovation, and strengthen regional and global resilience.

Strengthening Regional & Local Collaborations

SRHU is strongly dedicated to addressing Himalayan regional challenges through sustainable community-centric programs. In partnerships with grassroots NGOs, the university delivers healthcare, education, environmental conservation, and infrastructure development. Training over 7,300 individuals under the National Jal Jeevan Mission in springshed management, rainwater harvesting, and sanitation infrastructure has significantly improved safe water access and hygiene outcomes. Empowering 5,000+ farmers via livelihood programs—organic farming, aromatic crop cultivation, and orchard development—has reduced migration and enhanced rural resilience.

During crises such as COVID-19, SRHU has provided critical support to vulnerable communities through emergency relief initiatives.

RDI

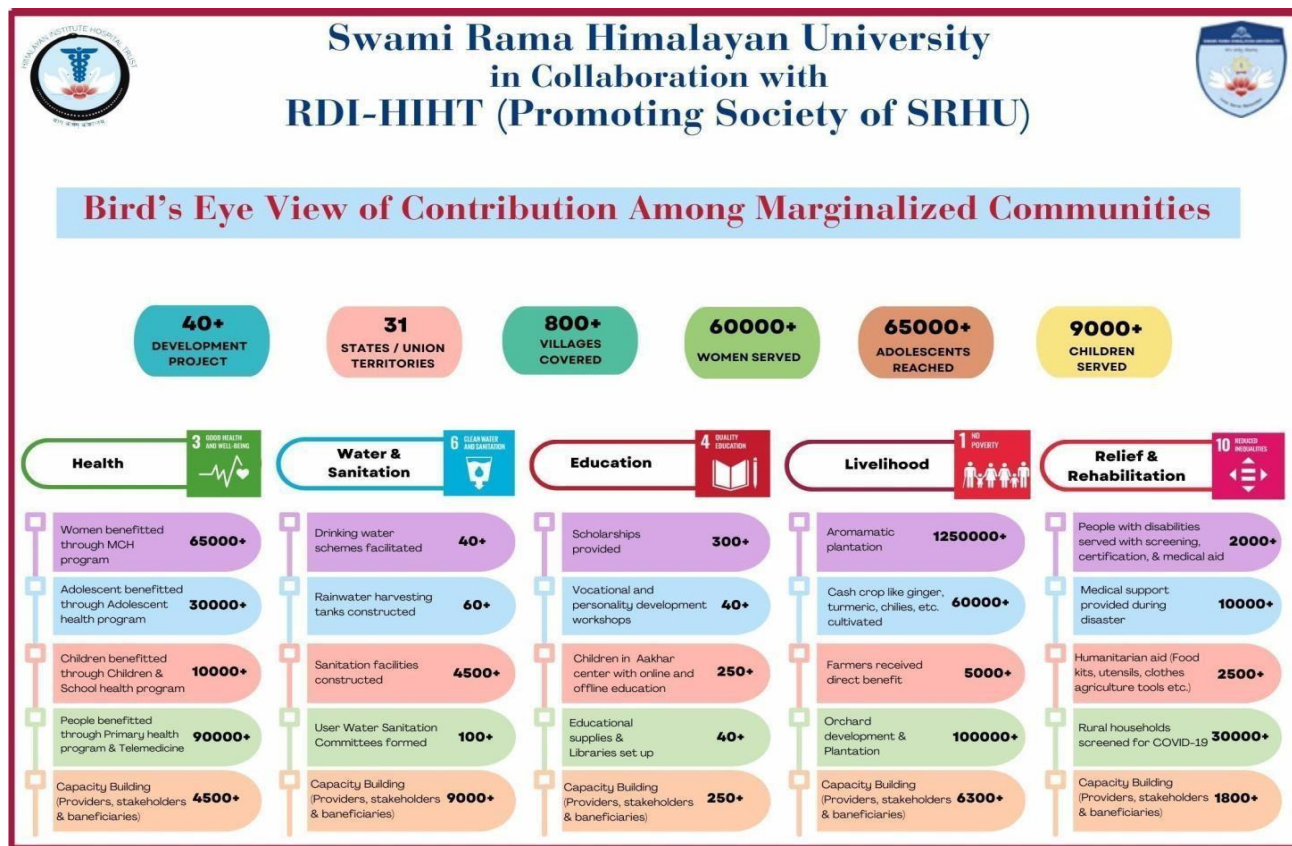
- In collaboration with the Rural Development Institute, SRHU has made significant contributions in providing opportunities for social upliftment.

Reach & Beneficiaries

- Engaged in 31 states/UTs, covering 800+ villages
- Benefitted 65,000+ Adolescents, 60,000+ Women and 9,000+ Children

Thrust Areas

- Health Initiatives
- Water and Sanitation
- Education and Skill Development
- Livelihood Generation
- Relief and Rehabilitation



Area of Focus	Initiatives and Actions	Achievements/Impact
Community Engagement	<ul style="list-style-type: none"> Collaborations with NGOs and grassroots organizations. Focus on healthcare, education, and environmental conservation. 	<ul style="list-style-type: none"> Improved healthcare access in remote areas. Enhanced education for underprivileged children. Promoted sustainable practices.
Water Supply and Sanitation	<ul style="list-style-type: none"> Addressed water scarcity in Himalayan regions. Community-driven approaches involving local stakeholders. 	<ul style="list-style-type: none"> Safe water access: 55 liters per capita per day. Significant reduction in waterborne diseases. Cleaner, healthier communities.
National Jal Jeevan Mission	<ul style="list-style-type: none"> Springshed management and rainwater harvesting. Training of 7,300+ individuals. Sanitation infrastructure development. 	<ul style="list-style-type: none"> Constructed 3,100 toilets across 96 villages. Built 309 rainwater harvesting tanks. Developed 55 hectares of springshed areas.

Hygiene Promotion	<ul style="list-style-type: none"> Awareness campaigns on hand-washing and sanitation practices. 	<ul style="list-style-type: none"> Over 90% of residents adopted regular handwashing habits. Improved public health outcomes.
Livelihood Development	<ul style="list-style-type: none"> Introduced organic farming and aromatic crops. Trained farmers in orchard development. Promoted cash crop cultivation. 	<ul style="list-style-type: none"> Supported 5,000 farmers. Established 10 lemon orchards. Harvested significant quantities of lemongrass, turmeric, and ginger.
Relief and Rehabilitation	<ul style="list-style-type: none"> COVID-19 relief: Training frontline workers and distributing essential kits. Disaster medical aid for vulnerable communities. 	<ul style="list-style-type: none"> Aided 30,000 individuals during COVID-19. Provided resources to 2,000 differently-abled individuals. Assisted 10,000 disaster-affected individuals.
Training and Capacity Building	<ul style="list-style-type: none"> Trained 9,000+ individuals in water and sanitation management. Acted as a National Training Partner for key programs. 	<ul style="list-style-type: none"> Benefitted participants from 28 states/UTs. Strengthened community skills for sustainable development.
Regional Development Projects	<ul style="list-style-type: none"> Conducted outreach programs. Encouraged social entrepreneurship among students and faculty to address local challenges. 	<ul style="list-style-type: none"> Enhanced regional resilience and sustainability. Promoted innovative solutions to regional issues.

Acknowledgment from Andaman Nicobar State Water And Sanitation Mission, for organizing training on capacity building program in compliance of Jal Shakti Ministry, GoI

Telefax: 03192-233094

अण्डमान निकोबार राज्य जल एवं स्वच्छता मिशन
ANDAMAN NICOBAR STATE WATER AND SANITATION MISSION
(समाधि पंजीकरण अधिनियम 1860 के अंतर्गत पंजीकृत समाधि)
(A Society registered under Society Registration Act 1860)
 मुख्य अभियंता कार्यालय, परिसर, अंनली-फ्लोरिड, निर्माण भवन, पोर्टब्लेयर
CE's OFFICE COMPLEX, APWD, NIKMAN BHAWAN, PORTEBLAIR
 पंजीकरण सं. 1352
 Registration No. 1352

No. 1-19/ANSWSM/2021-22/1555 Port Blair, dated the 15 Dec., 2023


LETTER OF APPRECIATION

This is to certify that on request from ANSWSM officers of Swami Rama Himalayan University, Jolly Grant, Dehradun, Himalayan Institute Hospital Trust, an empanelled Knowledge Resource Center (KRC) under National Jal Jeevan Mission organised training program for engineers and officers working in the field of water supply in Andaman Public Works Department.

Training was organized from October 30th to November 01st, 2023 as part of capacity building program in compliance of Guide lines of Jal Shakti ministry, Government of India for engineers and officers working under Jal Jeevan Mission of the state.

Topic of training was "Operation & Maintenance of the Water Supply System, Utility Approach and Tariff Collection Mechanism". Total 51 engineers and officers participated in the program. It included discussion on important components of water supply system, quality, sustainability issues and other different aspect of community participation. Training included lecture and field visit as well as team work.

The team of six resource persons of SRHU headed by Advisor Shri H.P Uniyal trained our officers on different. Overall, training programme was very useful and beneficial to our officers. I convey my best wishes to the team of resource person from SRHU.


 Director
 ANSWSM

To
 The Himalayan Institute Hospital Trust,
 Swami Rama Himalayan University,
 Jolly Grant, Dehradun
 Uttarakhand

Strategic Collaborations: Building a Global and Regional Network

SRHU has established a diverse portfolio of over 40 active Memorandums of Understanding (MoUs) and strategic collaborations with leading national and international institutions, including AIIMS Rishikesh, IIT Roorkee, ICMR, CSIR institutes, and global bodies such as the Lisbon Academic Medical Centre, Kyoto University, ICIMOD Nepal, and the Global Consortium for Breast Cancer in Young Women (GCBCYW).

These partnerships enable joint research on public health, environmental sustainability, and social equity; faculty and student exchanges; cultural interaction; and capacity-building through workshops and training.

Additionally, collaborations with organizations like the National Health Mission, The Hans Foundation, and Tata Strive support healthcare delivery, skill development, and livelihood generation, enhancing SRHU's impact at both the regional and global levels.

Collaboration Type	Key Initiatives	Outcomes/Impact
Academic Collaborations	<ul style="list-style-type: none"> Joint academic programs fostering cross- disciplinary expertise. Student and faculty exchange initiatives. Shared research infrastructure for enriched learning and innovation. 	<ul style="list-style-type: none"> Enhanced global perspectives among students and faculty. Improved academic and research outcomes. Stronger knowledge exchange networks.
Industry and Government Partnerships	<ul style="list-style-type: none"> Skill-building programs to develop industry- ready professionals. Joint projects tackling societal challenges like health, sustainability, and technology. Policy consultation for sustainable growth frameworks 	<ul style="list-style-type: none"> Better employability for students. Addressed critical regional and national issues. Influenced sustainable development policies
International Collaborations	<ul style="list-style-type: none"> MoUs with global institutions for collaborative research. Research initiatives on climate change, public health, and inequality. Cultural exchange programs to foster global citizenship. 	<ul style="list-style-type: none"> Solutions for pressing global challenges. Stronger cross-cultural understanding. Broadened scope for innovation and collaboration.

MoUs to Academic Collaborations: [Click here](#)

Research and Innovation Networks:

Swami Rama Himalayan University (SRHU) fosters active collaboration among its faculty and researchers to address pressing global and regional challenges. These research partnerships are centered on:

- **Public Health:** Creating cost-effective, innovative healthcare solutions to improve access for marginalized and underserved populations.
- **Sustainability:** Promoting renewable energy innovations and environmental conservation practices to support long-term sustainable development.
- **Social Justice:** Investigating strategies to reduce disparities and promote greater equity and inclusion across communities.

Through these initiatives, SRHU is committed to delivering practical solutions, driving meaningful innovation, and contributing to progress in key areas of global concern.

Extramural Research: [Click here](#)

Intramural Research: [Click here](#)

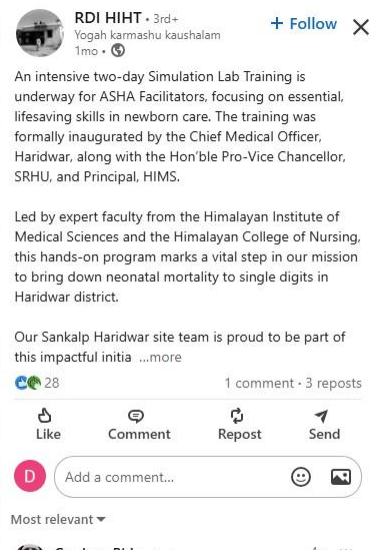
SCOPUS linked papers: [Click here](#)

Capacity Building & Academic Excellence

SRHU's Regional Centre for Medical Education Technologies has trained nearly 1,000 faculty members from 17 medical colleges in Northern India, promoting competency-based medical education. [Click here](#)

In addition, the university's Research & Development Cell oversees innovation promotion policy and collaboration with national and international institutions, including incubating Centres of Excellence and supporting Technology Business Incubators.

[Click here for more information](#)



Intensive two-day Simulation Lab Training for ASHA Facilitators



A two-day Simulation Lab hands-on training focused on equipping healthcare workers with

Research Promotion Policy: [Click here](#)

Research Patents: [Click here](#)

Research Consortium: [Click here](#)

Community Outreach & Disaster Response

In alignment with SDG 17, SRHU has trained 9,000+ individuals in water, sanitation, and livelihood initiatives ([Click here 1, 2, 3](#)) and directly supported 30,000+ beneficiaries in healthcare delivery and disaster relief ([Click here](#)). These efforts include constructing infrastructure such as hygiene facilities and water systems, distributing essential kits, and delivering critical services during emergencies.



General Health Camp in progress in a remote tribal community

Innovation Ecosystem & Entrepreneurship

SRHU runs active Technology Business Incubators (TBIs) nurturing 40+ startups, offering funding, mentorship, and innovation support. Institutional and industry collaborations through bodies like CII, Tata Strive, CSIR, and NABARD amplify the creation of socially relevant technologies and sustainable ventures.

[For more information click here](#)

Livelihood Empowerment and Community-Led Development [Click here](#)

In line with SDG 17, SRHU integrates community needs with technical support:

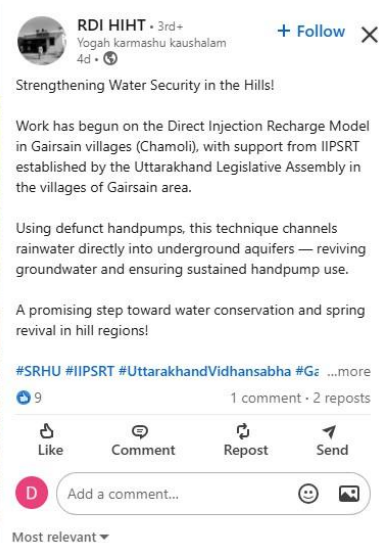
- 5,000+ farmers have been trained in organic farming, aromatic crops, and orchard development, reducing migration and improving income security.
- Over 12.5 lakh aromatic plants and 1 lakh cash crops have been cultivated, leading to significant produce of turmeric, lemongrass, ginger, and red chili.

The university also fosters social entrepreneurship through outreach programs, empowering students and local communities to address regional challenges.

Public Health, Water, and Sanitation Initiatives

Under the National Jal Jeevan Mission, SRHU has:

- Trained over 7,300 individuals in springshed management, sanitation infrastructure, and rainwater harvesting across 28 states/UTs.
- Facilitated the construction of 3,100+ toilets, 309 rainwater harvesting tanks, and the development of 55 hectares of springshed areas in Uttarakhand.



These efforts have led to:

- Access to over 55 litres per capita per day of safe drinking water in target regions
- A shift in hygiene behaviour, with handwashing practices rising from 15% to over 90%
- Significant reduction in diarrhoeal and waterborne diseases

Disaster Relief and Health System Strengthening

SRHU has played a critical role during public health emergencies and disasters:

- 30,000+ individuals supported during COVID-19 through health screenings, food kits, hygiene supplies, and awareness drives
- Over 2,000 differently-abled persons received welfare support
- Medical aid provided to over 10,000 disaster-affected individuals

SRHU collaborates with local health departments and panchayats to ensure responsive and inclusive healthcare delivery.

Innovation and Entrepreneurship Support

SRHU's Technology Business Incubator (TBI) supports:

- 43+ startups and projects, offering incubation, mentorship, and access to R&D infrastructure
- Collaboration with industry partners such as CII, STPI, and LifeCell International for translating research into market-ready solutions

The university's innovation ecosystem fuels regional economic growth and technological advancement.

[For more information click here](#)

Knowledge Sharing and Policy Influence

- Faculty contributions to international journals and conferences influence global best practices in health, sustainability, and social development.
- SRHU actively engages in policy consultations and offers technical expertise in sustainable infrastructure, health systems, and data-driven decision-making.
- Internal governance aligns with SDG 17 through embedded policies on
- Cross-sector collaboration, sustainability integration, and inclusive education.

Research

Sustainable Development Goal 17 emphasizes the importance of strengthening global partnerships to support and achieve the ambitious targets of the 2030 Agenda. Recognizing that complex global challenges demand collaborative, cross-sectoral, and interdisciplinary approaches, the following Scopus-indexed research contributions represent collaborative efforts across healthcare, education, public health, and policy.

These studies, involving multi-institutional authorship, global collaborations, and knowledge exchange, exemplify how strategic partnerships in academia and research can accelerate progress. From improving maternal and child health outcomes to enhancing stakeholder engagement in higher education and shaping public health strategies, each paper underscores the essential role of shared responsibility and collective expertise.

SN	PUBLICATION TITLE	DOI
1	Born Too Soon: learning from the past to accelerate action in the next decade	10.1186/s12978-025-02044-8
2	Early diagnosis of lupus: A possibility. A multicentric study from SLE Special Interest Group (SIG) of Indian Rheumatology Association (IRA)	10.1177/09612033241283111
3	SARS-CoV2 and SARS-CoV2 vaccinology	10.1016/B978-0-443-15241-2.00010-7
4	Impact of stakeholder involvement in continuous quality improvement in Indian higher education institutions	10.4018/979-8-3693-1698-6.ch021
5	Motivating tomorrow's blood donors: Impact of college-driven blood grouping initiatives	10.1016/j.traccli.2024.06.010
6	Evaluating global accreditation standards for higher education	10.4018/979-8-3693-1698-6
7	Guidance on mucositis assessment from the MASCC Mucositis Study Group and ISOO: an international Delphi study	10.1016/j.eclinm.2024.102675